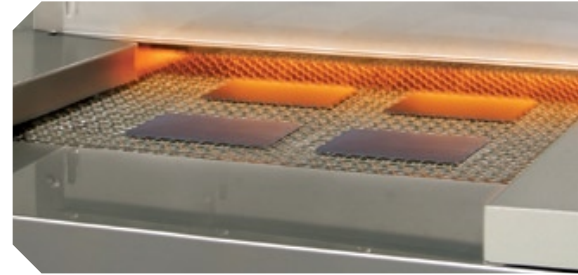


◆ **60MW Infrared
Drying/Firing Furnace**
Maximize your throughput



The Despatch 60MW infrared drying/firing furnace is designed for maximum throughput, consistent process repeatability and maximum equipment up-time resulting in consistently high yields, superior product quality and reduced cost of ownership.

In addition to these exceptional performance capabilities, this model features a touchscreen graphical user interface, eye-level electronics access, and the first of its kind push-button chamber access. These innovations make it easy to use, maximize performance and up time and allow you to continually improve your results.

FEATURES AT A GLANCE

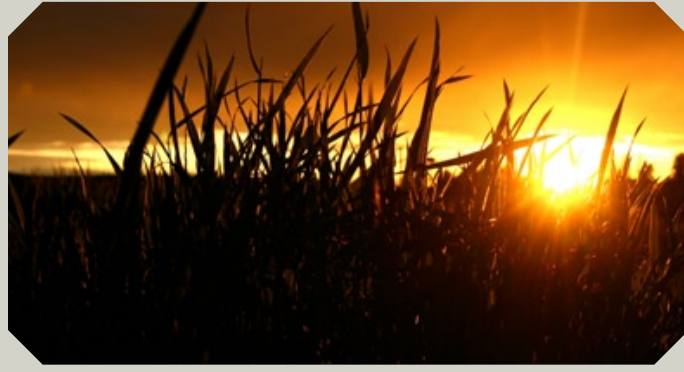
- ◆ Rapid thermal ramping ($\geq 100^{\circ}\text{C}/\text{sec}$)
- ◆ Enhanced thermal cooling ($> 100^{\circ}\text{C}/\text{sec}$)
- ◆ Closed loop temperature controls
- ◆ Enhanced software recipe management
- ◆ Touchscreen graphical user interface
- ◆ Master production control interface
- ◆ Data logging
- ◆ Redundant over-temperature shutdown
- ◆ Minimized wafer shadowing design
- ◆ Safe, simple chamber accessibility
- ◆ Eye-level electronics for easy maintainability

OPTIONS

- ◆ Water-cooled heat exchanger
- ◆ Failed element monitor
- ◆ Profiling systems
- ◆ VOC thermal oxidizer
- ◆ Water filter bypass
- ◆ Ultrasonic belt cleaner
- ◆ Uninterruptible power supply
- ◆ Custom belt widths
- ◆ Mesh belt with stand-off (dimple) supports
- ◆ Integration to wafer automation equipment



Patented technology



60MW DRYING/FIRING FURNACE

CDF 7224

CDF 9024

PRODUCT CONFIGURATION

Overall length	1191 cm (469 in)	1283 cm (505 in)
Overall width	1186 cm (73 in)	160 cm (63 in)
Overall height	179 cm (70 in)	201 cm (79 in)
Standard entrance table	48 cm (19 in)	92 cm (36 in)
Inspection area	46 cm (18 in)	46 cm (18 in)
Standard exit table	94 cm (37 in)	92 cm (36 in)
Conveyor type	Lightweight balance spiral weave, Nichrome V, friction drive	
Conveyor height above floor	110 cm ± 3.8 cm (43.3 in ± 1.5 in)	100 cm ± 3.81 cm (39 in ± 1.5 in)
Conveyor width (custom up to 24 in /61 cm wide)	45.7 cm (18 in)	45.7 cm (18 in)
Net weight	5,675 kg (12,500 lbs)	4,535 kg (10,000 lbs)
Shipping weight	6,356 kg (14,000 lbs)	5,215 kg (11,500 lbs)

ELECTRICAL REQUIREMENTS

Voltage	208–480V/3 phase/50–60 Hz	208–480V/3 phase/50–60 Hz
Maximum load	~306 Amps	~294 Amps
Nominal load	~122 Amps	~118 Amps

WATER REQUIREMENTS

Typical flow	11 lpm (3 gpm)	11 lpm (3 gpm)
Pressure (maximum)	827 370 pascal (120 psi)	827 370 pascal (120 psi)
pH level	7.2–7.6	7.2–7.6
Recommended inlet temperature	15°C (59°F)	15°C (59°F)

EXHAUST

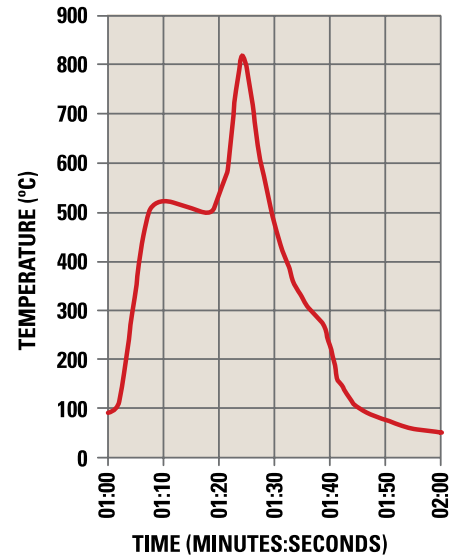
Process exhaust venturi assist <i>*hood required, no direct connection</i>	5 sets	5 sets
Cabinet exhaust	1,700 m ³ /h (60,000 scfh)	2,550 m ³ /h (90,000 scfh)

PROCESS ATMOSPHERE

Clean dry air (CDA)	68 m ³ /h (2,400 scfh) typical	119 m ³ /h (4,200 scfh) minimum
---------------------	---	--

PROCESS CAPABILITIES

Maximum temperature (drying/firing)	400°C/1,000°C	400°C/1,000°C
Conveyor speed range	64–635 cm/min (25–250 ipm)	64–635 cm/min (25–250 ipm)
Conveyor speed accuracy	± 0.5%	± 0.5%
Throughput (6x6 in/156x156 mm wafers with 250 ipm belt speed)	3,400 wafers per hour	3,400 wafers per hour



Rapid ramp up and cool down capabilities enable you to optimize your firing profiles for high efficiency cell production.

Notes: Specifications are subject to change without notice. Contact Despatch for most updated specification.

SERVICE AND TECHNICAL SUPPORT

service parts: 1-800-473-7373
international service/main: 1-952-469-8230
service fax: 1-952-469-8193

service@despatch.com

GLOBAL HEADQUARTERS

phone: 1-888-DESPATCH (1-888-337-7282)
international/main: 1-952-469-5424
fax: 1-952-469-4513

sales@despatch.com
 www.despatch.com

8860 207th Street West
 Minneapolis, MN 55044 USA

Despatch
 INDUSTRIES